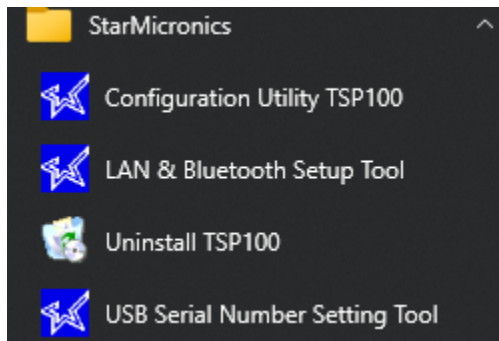
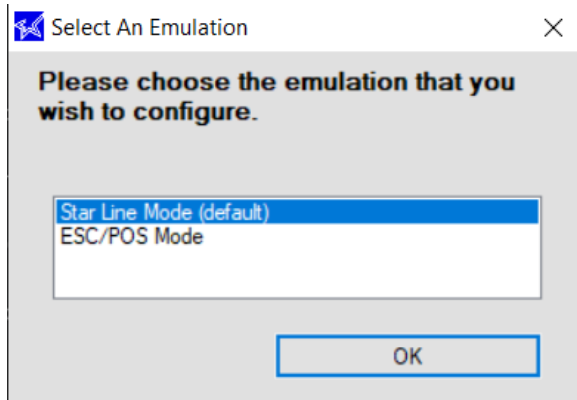


STAR RECEIPT PRINTER- APPLYING A IMAGE TO THE RECEIPT

From start menu > Open the Star Micronics folder> Choose Configuration Utility

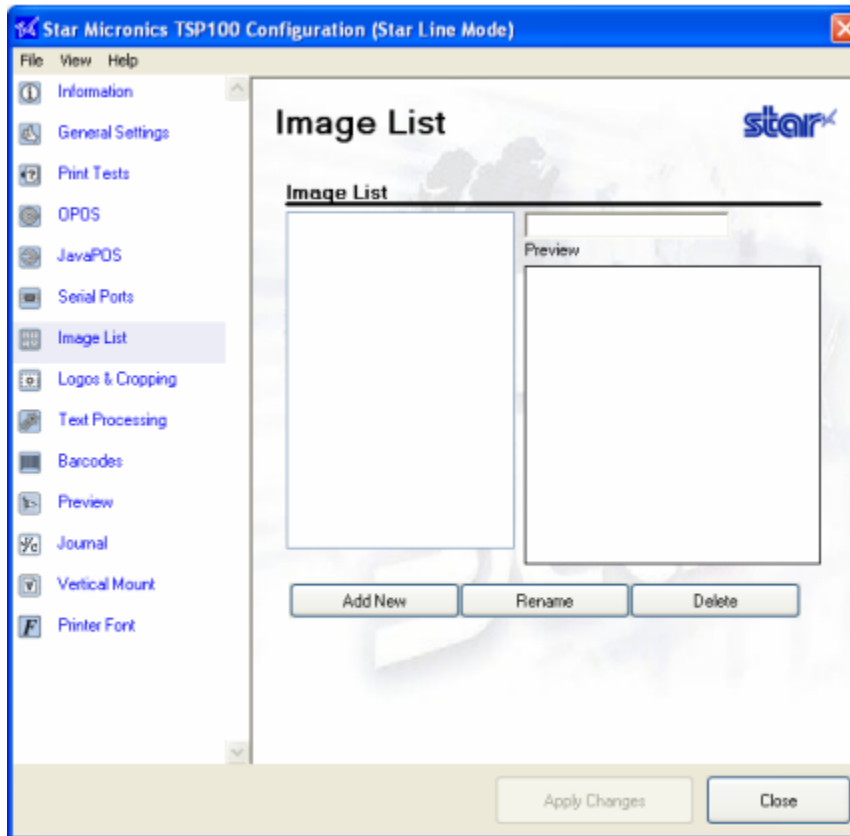


Use the default

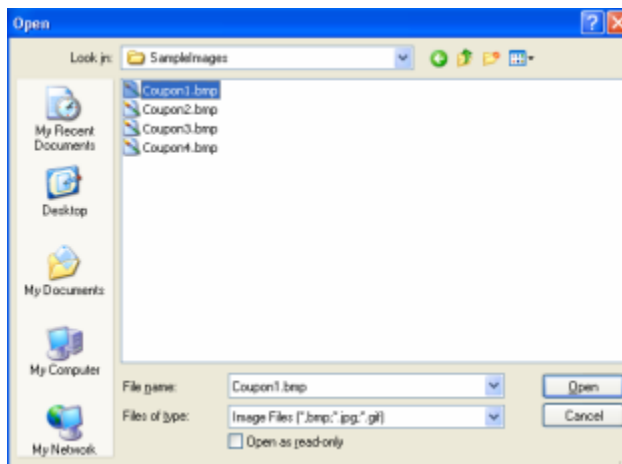


STAR RECEIPT PRINTER- APPLYING A IMAGE TO THE RECEIPT

Adding an Image



Click “Add New Image” to browse for an image to add to the list.



Select the desired image and click “Open” to open the image in the image importer.

STAR RECEIPT PRINTER- APPLYING A IMAGE TO THE RECEIPT



Use the image importer to:

- Give your image a unique name using the Image ID Name field
- Adjust image width in 1/8 mm increments using the image width slider
- Select the preferred dithering method
- Adjust dither settings to desired image quality

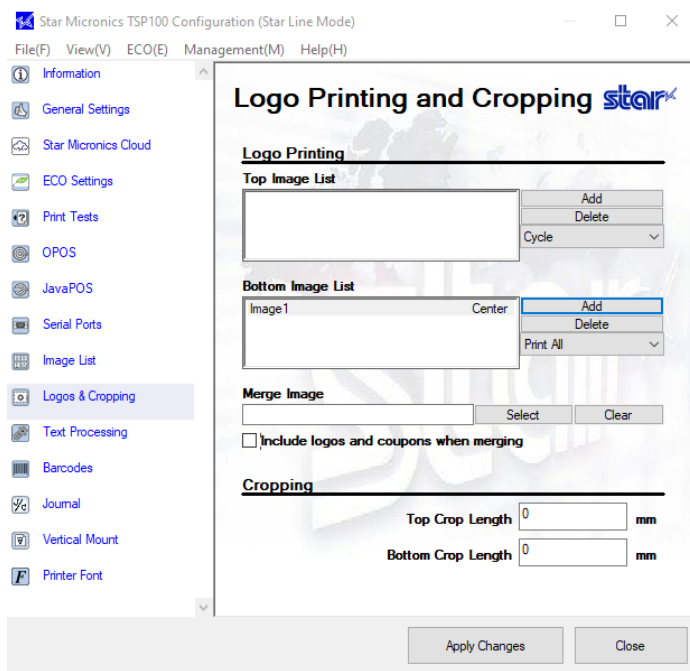
Note: Each dither method offers different adjustment options. For best results it is recommended to experiment with the settings to find which setting works best for any particular image.

After adjusting the image to your satisfaction, click “Use Image” to add the image to the image list and make it available for use with the TSP100 futurePRNT’s Logos and Cropping utility.

Once the image is to your satisfaction go to **Logos & Cropping**.

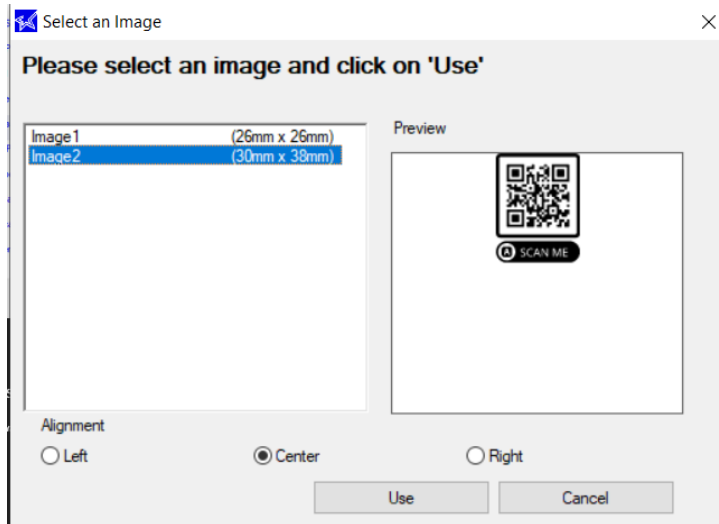
Logos & Cropping allows for the selection of images to be printed at the top of each receipt (logos) and images to be printed at the bottom of each receipt (coupons). The ability to crop a receipt for white space or logo/coupon removal can also be configured here.

STAR RECEIPT PRINTER- APPLYING A IMAGE TO THE RECEIPT



Choose your location where you want to add the Image. In this test I selected the Bottom.

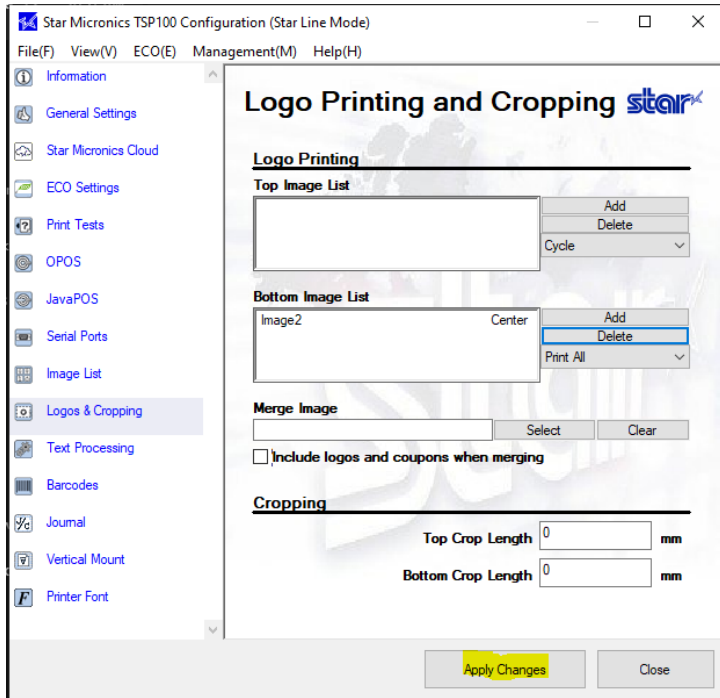
Click "Add" next to the "Bottom List" textbox to add images from the image list.



Choose an image from your currently available image list, select the preferred alignment and then click "Use".

Apply Changes

STAR RECEIPT PRINTER- APPLYING A IMAGE TO THE RECEIPT



After the changes are applied go into Anthology and do a test print, in my test I just chose reprint.

